

# QoS based Web Service Selection and Multi-Criteria Decision Making Methods

Pallavi Bagga<sup>1</sup>, Aarchit Joshi<sup>2</sup>, Rahul Hans<sup>1,2\*</sup>

<sup>1</sup> Department of Computer Science and Engineering, Lovely Professional University, Phagwara, Punjab (India)

<sup>2</sup> Department of Computer Science and Engineering, DAV University, Jalandhar, Punjab (India)

Received 8 June 2017 | Accepted 26 October 2017 | Published 15 December 2017



## ABSTRACT

With the continuing proliferation of web services offering similar efficacies, around the globe, it has become a challenge for a user to select the best web service. In literature, this challenge is exhibited as a 0-1 knapsack problem of multiple dimensions and multiple choices, known as an NP-hard problem. Multi-Criteria Decision Making (MCDM) method is one of the ways which suits this problem and helps the users to select the best service based on his/her preferences. In this regard, this paper assists the researchers in two conducts: Firstly, to witness the performance of different MCDM methods for large number of alternatives and attributes. Secondly, to perceive the possible deviation in the ranking obtained from these methods. For carrying out the experimental evaluation, in this paper, five different well-known MCDM methods have been implemented and compared over two different scenarios of 50 as well as 100 web services, where their ranking is defined on an account of several Quality of Service (QoS) parameters. Additionally, a Spearman's Rank Correlation Coefficient has been calculated for different pairs of MCDM methods in order to provide a clear depiction of MCDM methods showing the least deviation in their ranking. The experimental results comfort web service users in conquering an appropriate decision on the selection of suitable service.

## KEYWORDS

AHP, COPRAS, SAW, Spearman's Rank Correlation Coefficient, TOPSIS, VIKOR.

DOI: 10.9781/ijimai.2017.12.001

## I. INTRODUCTION AND BACKGROUND

A web service is a self-describing software application which can be advertised, located and used over the Internet [5]. To initiate the provisioning of web service, a user must first identify the service that is desired. "How will I effectively select the web service that will meet my performance requirements?" [1]; the answer to this question, however, still remains a challenge faced by the user because of numerous services sharing similar functionalities in the web environment. The rise in the number of Web Services has been caused due to growing demands of increasing the flexibility of IT infrastructure in order to support rapidly evolving business needs [2]. The selection of web services is not only limited to meeting the users' needs, but also, non-

functional information, including, reliability, response time, etc. [3].

### A. Motivation

A Web Service can also be viewed as one of the encouraging technologies that could help business units to systematize their web operations on a large scale by automatic discovery and consumption of services [5]. In the Web Service Architecture [6], the Service Requester (client or user) may receive a pool of web services from the Service Provider (server) as per the initial query in "Service Discovery" stage. Subsequently, in "Service Selection" stage, the "best" web service, which satisfies all the constraints set by the original requester, is selected from the pool. This process of service filtration is carried out based on the degree of satisfaction to the users' non-functional requirements known as Quality of Service (QoS) parameters. For example, while booking flights or downloading music, there exists a number of available services sharing identical functionalities, however, they exhibit different QoS. A web service with remarkable QoS can

\* Corresponding author.

E-mail address: rahulhans@gmail.com

Please cite this article in press as:

P. Bagga, A. Joshi, R. Hans. QoS based Web Service Selection and Multi-Criteria Decision Making Methods, International Journal of Interactive Multimedia and Artificial Intelligence, (2017), <http://dx.doi.org/10.9781/ijimai.2017.12.001>

deliver big competitive influence to service providers while bringing the social prosperity to service consumers. It has been acknowledged from the literature that due to intensive global competition, the experts recognize the decision on web service selection an important activity.

### B. Quality of Service (QoS) Parameters for Web Service Selection

The QoS based Web Service selection has gained the attention of many researchers in recent years, since maintaining the quality of their web services has become the topmost priority of each web service provider. In this paper, therefore, the activity of web service selection is carried out based on both functional as well as non-functional QoS parameters [4, 11]. QoS attributes are measured on a scale of 0 to 9. To facilitate the description, the set of QoS attributes is divided into two subsets: Benefit (Positive) attributes and Cost (Negative) attributes, as shown in Table I. The values of positive attributes need to be maximized, whereas the values of negative attributes need to be minimized. For the sake of simplicity, the values closer to 9 for benefit criteria and closer to 1 for cost criteria are considered good.

### C. Multi-Criteria Decision Making (MCDM) Methods

In past many years, Multi-Criteria Decision Making (MCDM) methods have proven their effectiveness in addressing different complex real-world decision making problems. MCDM methods use knowledge from many fields, including economics, mathematics, behavioral decision theory, software engineering, computer technology and information systems [9]. In the context of this paper, the goal of MCDM methods is to find one web service from a pool of several web services such that the QoS is optimized and users' end-to-end QoS requirements are satisfied. In MCDM methods, each problem is stated in matrix design as:

	$C_1$	...	$C_n$
$A_1$	$x_{11}$	...	$x_{1n}$
...	...	...	...
$A_m$	$x_{m1}$	...	$x_{mn}$

where,

$A_1, A_2, \dots, A_m$  are possible 'm' alternatives or choices among which decision makers have to choose,  $C_1, C_2, \dots, C_n$  are possible 'n' criteria or attributes the basis of which the alternatives are ordered or selected,

$x_{ij}$  is the rating of alternative  $A_i$  with respect to criterion  $C_j$ .

The general flowchart of MCDM method is shown in Fig 1. The sensitivity analysis is done to address the problems of uncertainty, imprecision, and inaccurate determination [10]. Various MCDM methods used for web service selection in the literature are briefly summarized in Table II, however Tables III and IV conveys overview and the advantages and disadvantages of various MCDMs used in this research concluded from literature by the authors. For a particular case, two or more MCDM methods often generate different rankings of web services.

### D. Objectives of Present Research

The objectives of present study can be stated as follows:

- To address the problem of web service selection based on QoS.
- To study how service consumers are benefited by selecting the appropriate Web Service based on QoS using MCDM in literature.
- To implement and compare five different MCDM methods (AHP, TOPSIS, SAW, VIKOR and COPRAS) with two different large sets of web services (50 and 100) against 9 QoS attributes.

To evaluate the deviation in the rankings of different MCDM

methods using Spearman's Rank Correlation Coefficient and to conclude which MCDM methods produce similar ranking.

### E. Organization of Paper

The remainder of this paper is organized as follows: Section 2 throws light upon the dataset and several methods used for present study. Section 3 discusses the results from experimental evaluation. Finally, the conclusion and highlights on possible continuations of this work are addressed in Section 4.

## II. MATERIAL AND METHODS

### A. Dataset Used

The Quality of web service (QWS) dataset version 2.0 [12, 43] is chosen for the present study. This dataset includes a set of 2,507 web services and their QWS measurement which were conducted in 2007, using Web Service Broker (WSB) framework. Each row in the dataset represents a web service and its corresponding QWS measurements on nine different QoS parameters. In this paper, two different sets of 50 and 100 web services have been constructed by random sampling for the experimental study of various MCDM methods.

### B. Various MCDM Methods

MCDM methods help in selecting the optimal one from a set of alternatives with respect to the predefined set of attributes. MCDM methods are continuously growing in the application areas of Business, Mathematics, Decision Sciences, Management and Accounting, Social Sciences, Medicine, Environmental Science, Economics, Econometrics and Finance, etc. [19]. In this paper, for QoS based web service selection, five different existing MCDM methods are taken into account: Simple Additive Weighting (SAW) [15], Analytic Hierarchy Process (AHP) [14], Technique for Order Preference by Similarity to Ideal Solution (TOPSIS) [9], Višekriterijumsko KOmpromisno Rangiranje (VIKOR) [17] and COmplex PRoportional ASsessment (COPRAS) [18]. These methods are summarized in Tables III and IV. The general formal definition of MCDM is represented in (1):

$$mcdm_k \{f_k(A_{ij})\} \quad (1)$$

where,

$i=1,2,\dots,I; k=1,2,\dots,K; j=1,2,\dots,J$

$k$  is the set of different MCDM methods, i.e.  $k=\{AHP=1, TOPSIS=2, COPRAS=3, VIKOR=4, SAW=5\}$

$I$  is the number of alternatives

$J$  is the number of criterion

$f$  is the Aggregating function/method

$A_{ij}$  is the decision matrix  $A$  obtained by taking criteria 'i' and alternative 'j' as row and column respectively

### C. AHP (Analytical Hierarchy Process)

Suppose  $J$  represents the number of criterion and  $a_{jk}$  represents the importance of  $j^{\text{th}}$  criterion relative to  $k^{\text{th}}$  criterion in PC matrix. The AHP consists of following steps [14]:

- Breaking down of a problem into a hierarchy of decision criteria and alternatives.
- Relative importance of each criterion is measured with respect to other criterion, which is known as Pairwise Comparison PC process. The consistency checks are also performed while the evaluations are made by the decision makers.
- Normalization of pairwise comparison matrix by using (2.1).



TABLE II. SUMMARY OF MCDM BASED EXISTING RELATED RESEARCHES

Reference No.	Authors	Year	Publisher	No. of Citations	No. of Criteria	MCDM	Target area
[34]	Shaikh et al.	2004	IEEE	10	3	AHP	E-business processes
[33]	Chemane et al.	2005	IEEE	3	4	AHP	Internet Access Technology
[30]	Colace et al.	2006	IEEE	40	5	AHP	E-learning
[26]	Zhuang et al.	2007	IEEE	8	NS	Fuzzy Multi-Attributive Group Decision-Making	Web Service Selection
[38]	Xiong et al.	2007	IEEE	53	6	Fuzzy MCDM	Web service selection
[29]	Godse et al.	2008	IEEE	23	5	AHP	Prioritizing Web Service Features
[16]	Tseng	2009	Elsevier	210	21	Grey theory, Fuzzy theory, DEMATEL	Customer Service Quality Expectation
[25]	Sun et al.	2009	Elsevier	140	12	Fuzzy TOPSIS	Shopping Websites
[40]	Pervaiz	2010	IEEE	35	4	AHP	Access Network Selection in WLAN
[41]	Yang et al.	2010	IEEE	0	4	CRML, TOPSIS	Cross-organizational service selection
[37]	Karim et al.	2011	IEEE	21	9	Enhanced PROMETHEE	Web Services
[39]	Garg et al.	2011	IEEE	193	6	AHP	Cloud Services Ranking
[36]	Luo et al.	2012	Elsevier	20	6	SAW	Wireless Network
[31]	Park et al.	2013	Springer	13	6	Pairwise comparison	Enterprise Resource Planning
[32]	Sun et al.	2013	IEEE	17	5	AHP	Consumer-centered Cloud services
[35]	Fakhfakh et al.	2013	Springer	4	3	MACBETH integrated with 2-additive Choquet integral	Degree of Service Orchestrations Measurement
[28]	Dragović et al.	2014	Taylor & Francis	14	5	AHP, Fuzzy Logic	Web services
[27]	Almulla et al.	2015	Elsevier	5	9	FDCRT, FSIRT	Real world web services
[21]	Lin et al.	2016	Elsevier	0	5	Hybrid of DEMATEL, PCA, ANP, VIKOR	Digital Music Services
[20]	Huang et al.	2016	Springer	0	6	DEMATEL, DANP	Social Networking sites
[22]	Sánchez-Lozano et al.	2016	Elsevier	5	10	Fuzzy AHP, Fuzzy TOPSIS	Geographical Information System
[23]	Gupta et al.	2016	Springer	0	6	Ordered Weighted Operators	Handling Outliers in Web Data
[24]	Rhimi et al.	2016	IEEE	0	NS	Fuzzy logic, TOPSIS	Skyline computation
[42]	Taibi et al.	2017	IMAI Software	0	4	Fuzzy AHP	Industrial Site Selection

Note: #Citations are taken up to November 2016, NS means Not Specified

DEMATEL: Decision MAKING Trial and Evaluation Laboratory, ANP: Analytical Network Procedure, PCA: Principal Component Analysis, DANP: Decision MAKING Trial and Evaluation Laboratory based Network Process, FSIRT: Fuzzy Interval-based Ranking Technique, FDCRT: Fuzzy Distance Correlation Ranking Technique, MACBETH: Measuring Attractiveness by a Categorical Based Evaluation TecHnique, SAW: Simple Additive Weighting, AHP: Analytic Hierarchy Process, TOPSIS: Technique for Order Preference by Similarity to Ideal solution, VIKOR: Višekriterijumsko KOmpromisno Rangiranje

$$A_{jk} = \frac{a_{jk}}{\sum_{i=1}^J a_{ik}}$$

where,  $j=1,2,\dots,J; k=1,2,\dots,J$  (2.1)

iv) The Criteria Weight Vector is built with the help of (2.2).

$$W_j = \frac{\sum_{i=1}^J a_{ik}}{J}$$

where  $j=1,2,\dots,J$  (2.2)

v) Obtaining the matrix S of scores of alternatives as shown in (2.3).

$$S = [s^1, s^2, \dots, s^J] \quad (2.3)$$

vi) Using (2.4) to calculate the matrix of global scores V.

$$V = S \cdot W \quad (2.4)$$

vii) Ranking of alternatives is done as per the decreasing order of global scores.

#### D. TOPSIS (Technique for Order Preference by Similarity to Ideal Solution)

Suppose I represents the number of alternatives and J represents the number of criterion;  $x_{ij}$  is the value assigned to  $i^{\text{th}}$  alternative with respect to  $j^{\text{th}}$  criterion. The TOPSIS consists of following steps [9]:

i) Normalization of decision matrix using (3.1).

$$r_{ij} = \frac{x_{ij}}{[\sum_{k=1}^J (x_{kj})^2]^{1/2}}$$

where  $i=1,2,\dots,I, j=1,2,\dots,J$  (3.1)

ii) Calculation of the weighted normalized decision matrix using (3.2).

$$v_{ij} = w_j \cdot r_{ij} \quad (3.2)$$

where  $W = \{w_1, w_2, \dots, w_j\}$  = relative weight about the criterion

iii) Determination of the positive ideal and negative ideal solutions which maximizes and minimizes the benefit criteria and cost criteria respectively using (3.3) and (3.4).

$$\begin{aligned} A^+ &= \{v_1^+, v_2^+, \dots, v_j^+\} \\ &= \{\max_j v_{ij} \mid j \in \text{set of Benefit Criteria}, \\ &\quad \min_j v_{ij} \mid j \in \text{set of Cost Criteria}\} \end{aligned} \quad (3.3)$$

$$\begin{aligned} A^- &= \{v_1^-, v_2^-, \dots, v_j^-\} \\ &= \{\min_j v_{ij} \mid j \in \text{set of Benefit Criteria}, \\ &\quad \max_j v_{ij} \mid j \in \text{set of Cost Criteria}\} \end{aligned} \quad (3.4)$$

iv) Calculation of each alternative from positive ideal solution and negative ideal solution with the help of (3.5) and (3.6) respectively (Euclidean distance).

$${}^+D_i = [\sum_{j=1}^J (v_{ij} - v_j^+)^2]^{1/2}, i=1,2,\dots,I \quad (3.5)$$

$${}^-D_i = [\sum_{j=1}^J (v_{ij} - v_j^-)^2]^{1/2}, i=1,2,\dots,I \quad (3.6)$$

v) Calculation of the relative closeness of each alternative to the ideal solutions using (3.7).

$$RC_i = \frac{{}^-D_i}{{}^+D_i + {}^-D_i}$$

where  $i=1,2,\dots,I$  (3.7)

vi) Ranking of alternatives is done as per the increasing order of relative closeness. Higher the relative closeness to ideal solution is, better is the alternative.

#### E. COPRAS (COMplex PROportional ASsessment)

Suppose I represents the number of alternatives and J represents the number of criterion;  $x_{ij}$  is the value assigned to  $i^{\text{th}}$  alternative with respect to  $j^{\text{th}}$  criterion;  $q_j$  represents the significance of  $j^{\text{th}}$  criterion. The steps of COPRAS are summarized as follows [18]:

i) Normalization of decision matrix using (4.1).

$$r_{ij} = \frac{x_{ij}}{\sum_{i=1}^I x_{ij}}$$

where  $i=1,2,\dots,I$  and  $j=1,2,\dots,J$  (4.1)

ii) Calculation of Maximizing Criteria  $S_+$  and Minimizing Criteria  $S_-$  using (4.2) and (4.3) respectively.

$$S_{+i} = \sum_{j=1}^{j'} r_{ij} \cdot q_j \quad (4.2)$$

where  $i=1,2,\dots,I; j'$  is the number of benefit criterion

$$S_{-i} = \sum_{j''=1}^{j''} r_{ij} \cdot q_j \quad (4.3)$$

where  $i=1,2,\dots,I; j''$  is the number of cost criterion

iii) Relative weight of each alternative is obtained using 4.4.

$$Q_i = S_{+i} \frac{\sum_{i=1}^I S_{-i}}{S_{-i} \cdot \sum_{i=1}^I 1/S_{-i}}$$

where  $i=1,2,\dots,I$  (4.4)

iv) Ranking of alternatives is done according to the ascending order of relative weight. Higher the relative weight of alternative is, higher is the priority of alternative.

#### F. VIKOR (VIšekriterijumsko KOMpromisno Rangiranje)

Suppose I represents the number of alternatives and J represents the number of criterion;  $f_{ji}$  is the value of  $j^{\text{th}}$  criterion for the  $i^{\text{th}}$  alternative. The VIKOR involves the aforementioned steps [17]:

i) Determination of the best and the worst values of criterion using (5.1) and (5.2) respectively.

$${}^+f_j = \max_i f_{ji} \text{ for benefit criterion}$$

$${}^-f_j = \min_i f_{ji} \text{ for cost criterion}$$

where  $j=1,2,\dots,J$  (5.1)

$${}^-f_j = \min_i f_{ji} \text{ for benefit criterion}$$

$${}^+f_j = \max_i f_{ji} \text{ for cost criterion}$$

where  $j=1,2,\dots,J$  (5.2)

ii) Computation of the values  $S_j$  and  $R_j$  using (5.3) and (5.4) respectively.

$$S_i = \frac{w_j (+f_j - f_{ji})}{\sum_{i=1}^I (+f_j - f_{ji})}$$

where  $j = 1, 2, \dots, J$  (5.3)

$$R_i = \max_j [w_j (+f_j - f_{ji}) / (+f_j - f_{ji})]$$

where  $j = 1, 2, \dots, J$  (5.4)

iii) Computation of  $Q_i$  using (5.5).

$$Q_i = v(S_i - S^+) / (S^- - S^+) + (1-v)(R_i - R^+) / (R^- - R^+) \quad (5.5)$$

where  $i = 1, 2, \dots, I$ ; and

$$S^- = \max_i \{S_i\}; S^+ = \min_i \{S_i\}; R^- = \max_i \{R_i\}; R^+ = \min_i \{R_i\}$$

iv) Three different Ranking of alternatives is done according to  $S$ ,  $R$  and  $Q$ . Lower the value of  $Q$  is, better is the alternative.

v) The alternative  $A$  is considered as the compromised solution if the following two conditions are satisfied:

- *C1-Acceptable Advantage*:  $Q(a^2) - Q(a^1) \geq DQ$ , where  $a^2$  and  $a^1$  are the alternatives with ranking second and first respectively;  $DQ = 1 / (\text{Number of alternatives} - 1)$ .
- *C2-Acceptable stability in decision making*: the alternative  $a^1$  must also be best ranked by  $S$  and  $R$ .

vi) If any of the conditions is not true, then the set of compromised solutions are proposed consisting of

- If only  $C2$  is not satisfied, then alternatives  $a^1$  and  $a^2$  are proposed.

- If only  $C1$  is not satisfied, then alternatives  $a^1, a^2, \dots, a^m$  are proposed;  $a^m$  is determined by the relation  $Q(a^m) - Q(a^1) < DQ$  for maximum 'm' (the positions of these alternatives are "in closeness").

**G. SAW (Simple Additive Weighting)**

Suppose  $I$  represents the number of alternatives and  $J$  represents the number of criterion;  $x_{ij}$  is the value assigned to  $i^{\text{th}}$  alternative. The SAW method consists of the following steps [15]:

- i) Normalization of decision matrix using (6.1) and (6.2) respectively for cost and benefit criterion.

$$V_{ij} = \frac{x_{ij}}{\max x_j} \quad (6.1)$$

$$V_{ij} = \frac{\min x_i}{x_{ij}} \quad (6.2)$$

- ii) Calculation of weighted normalized values is done using (6.3).

$$v_{ij} = V_{ij} \cdot w_j \quad (6.3)$$

where  $W = \{w_1, w_2, \dots, w_j\}$  = relative weight about the criterion;  $j = 1, 2, \dots, J$

- iii) The sum  $S$  is calculated correspond to each alternative using (6.4).

$$S_i = \sum_{i=1}^I v_{ij}$$

TABLE III. BRIEF OVERVIEW OF VARIOUS MCDM METHODS USED IN PRESENT STUDY

Method Name	Introduced By	Originating Year	Normalization Method	Distance Method	Aggregating Method
SAW	MacCrimmon	1968	Linear Normalization	NA	Additive Weights
AHP	Thomas Satty	1977	Linear Normalization	NA	Priority Vector
TOPSIS	Hwang and Yoon	1981	Vector Normalization	Euclidean	Closeness Coefficient
VIKOR	Serafim Opricovic	1990	Linear Normalization	Manhattan and Chebyshev	Distance from ideal solution
COPRAS	Zavadskas and Kaklauskas	1996	Linear Normalization	NA	Relative weight

Note: NA means Not Applicable

TABLE IV. COMPARISON OF VARIOUS MCDM METHODS

Method Name	Advantages	Disadvantages
AHP	<ul style="list-style-type: none"> <li>• Hierarchical structure of criteria.</li> <li>• Pairwise comparison gives better comparisons of criteria.</li> <li>• Gives option to evaluate quantitative and qualitative criteria and alternatives.</li> </ul>	<ul style="list-style-type: none"> <li>• If Hierarchical structure of criteria is not made properly user may get worst ranking.</li> <li>• In special cases (currencies exchange), it may not work.</li> <li>• Absolute zero doesn't exist.</li> </ul>
TOPSIS	<ul style="list-style-type: none"> <li>• Scalar value that accounts for both the best and worst alternatives simultaneously.</li> <li>• Sound logic that represents the thesaurus of human choice.</li> </ul>	<ul style="list-style-type: none"> <li>• Possess rank reversal problem.</li> <li>• Its use of Euclidian distance does not consider the correlation of attributes, difficult to weight and keep consistency of judgment.</li> </ul>
COPRAS	<ul style="list-style-type: none"> <li>• Degree of utility is the bases of ranking.</li> <li>• It doesn't require transformation of cost and benefit criteria.</li> </ul>	It has complex aggregation procedure.
SAW	Simple to understand and implement.	Result not always real to situation.
VIKOR	It gives Ideal and compromised solution.	Complex to understand and implement.



$$\text{where } i=1,2,\dots,I \quad (6.4)$$

iv) Ranking of alternatives is done according to the increasing order of S.

### H. Spearman's Rank Correlation Coefficient

The Spearman's rank correlation coefficient method assists in finding the similarity between two sets of ranking obtained from two different 'k<sup>th</sup>' and 'i<sup>th</sup>' MCDM methods, using (7):

$$\rho_{ki} = 1 - \frac{6 \sum_{i=1}^n d_i^2}{n^3 - n} \quad (7)$$

where, n is the number of web services, and d<sub>i</sub> is the difference between the ranks of two MCDM methods. A larger absolute value indicates a good agreement between one MCDM method and other MCDM method [13].

## III. RESULTS AND DISCUSSIONS

For carrying out the experiments, two sets of web services are constructed out of present dataset: one set of 50 web services (Scenario 1) and other set of 100 web services (Scenario 2). Five different MCDM methods such as AHP, COPRAS, SAW, TOPSIS, and VIKOR are implemented in which the weights for different QoS attributes are calculated using AHP method in each scenario. The outline of experiments can be illustrated from Fig 2. The top five ranking of each method for each scenario is shown in Fig 3.

In order to check the consistency of user inputs to QoS attributes, the matrix analysis is usually done for AHP [14, 30], however, this effective technique of checking the evaluations made by the decision maker is used for each method while constructing the pairwise comparison matrices. The formula used for obtaining the Consistency Index is shown in (8).

$$CI = ((\lambda_{max} - n) / (n - 1)) \quad (8)$$

where, n is the matrix size and λ<sub>max</sub> is the eigen value.

Generally, the value CI = 0 is obtained by a perfectly consistent decision-maker, however, the smaller inconsistency may be tolerated. In particular, the inconsistencies are tolerable and reliable results have been expected from each method, if (9) holds true.

$$CI / RI < 0.1 \quad (9)$$

where, RI is Random Index, means the Consistency Index when matrix has entries which are completely random [30], and the ratio CI/RI is known as Consistency Ratio.

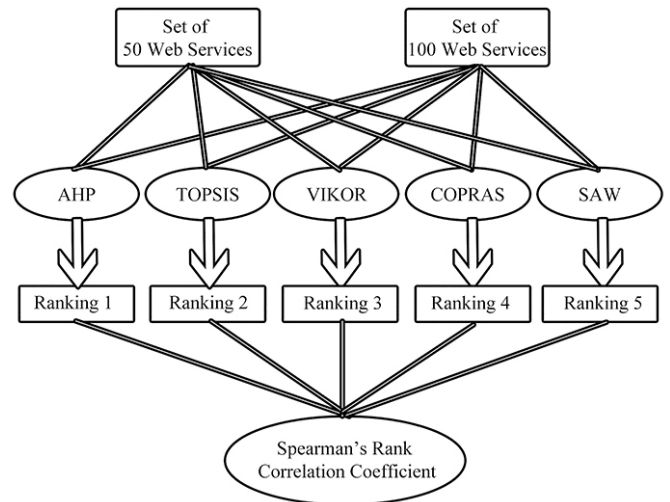


Fig. 2. Outline of Experimental Evaluation Process.

### Scenario 1: 50 Web services and 5 MCDM methods (Table V)

AHP method shows 29<sup>th</sup>, 50<sup>th</sup> and 18<sup>th</sup> numbered are the best three web services to be selected, whereas 21<sup>st</sup>, 6<sup>th</sup> and 38<sup>th</sup> numbered are the worst three to be selected. Moreover, COPRAS method produces 29<sup>th</sup>, 23<sup>rd</sup> and 50<sup>th</sup> as the best three web services and 38<sup>th</sup>, 7<sup>th</sup> and 27<sup>th</sup> as worst three web services. On the other hand, using SAW method, 18<sup>th</sup>, 40<sup>th</sup> and 30<sup>th</sup> numbered three best web services are obtained, whereas 21<sup>st</sup>, 38<sup>th</sup> and 6<sup>th</sup> are worst. Furthermore, TOPSIS method gives best three ranks to 29<sup>th</sup>, 23<sup>rd</sup> and 50<sup>th</sup> numbered web services, while worst three ranks to 7<sup>th</sup>, 6<sup>th</sup> and 38<sup>th</sup>. Also, 30<sup>th</sup>, 19<sup>th</sup> and 24<sup>th</sup> numbered are best three web services, while 32<sup>nd</sup>, 36<sup>th</sup> and 22<sup>nd</sup> are worst three web services chosen by VIKOR method.

### Scenario 2: 100 Web Services and 5 MCDM methods (Table VI)

AHP method shows 79<sup>th</sup>, 29<sup>th</sup> and 50<sup>th</sup> numbered are the best three web services to be selected, whereas 38<sup>th</sup>, 96<sup>th</sup> and 50<sup>th</sup> numbered are the worst three web services to be selected. While, COPRAS method produces 29<sup>th</sup>, 23<sup>rd</sup> and 79<sup>th</sup> as best three web services and 64<sup>th</sup>, 77<sup>th</sup> and 27<sup>th</sup> as worst three web services. Similarly, using SAW method, 18<sup>th</sup>, 95<sup>th</sup> and 40<sup>th</sup> numbered three best web services are obtained, whereas 6<sup>th</sup>, 96<sup>th</sup> and 53<sup>rd</sup> are worst. On one hand, TOPSIS method gives best three ranks to 29<sup>th</sup>, 23<sup>rd</sup> and 79<sup>th</sup> numbered web services, on the flip side, worst three ranks to 96<sup>th</sup>, 38<sup>th</sup> and 53<sup>rd</sup>. Also, 30<sup>th</sup>, 56<sup>th</sup> and 87<sup>th</sup> numbered are best three web services, while 78<sup>th</sup>, 22<sup>nd</sup> and 73<sup>rd</sup> are worst three web services chosen by VIKOR method.

Clearly, in both the scenarios (1 and 2), rankings obtained from five different MCDM methods in the QoS based Web Service Selection problem yields divergent results. This difference in ranking can be seen due to either the use of different normalization techniques on decision

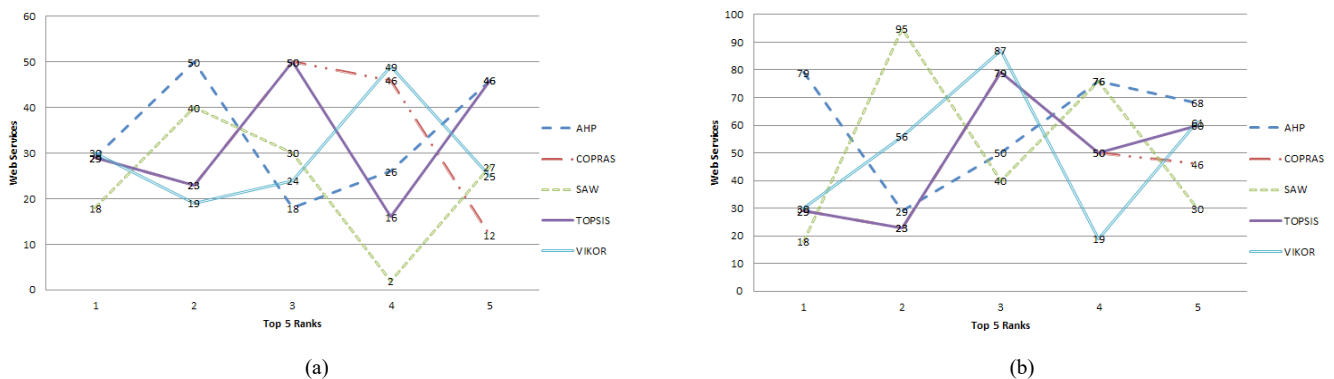


Fig. 3. Graphical Comparison of Top 5 Ranks obtained by each MCDM method for both scenarios: (a) 50 Web Services (b) 100 Web Services.

TABLE V  
RANKS OF 50 WEB SERVICES OBTAINED FROM 5 MCDM METHODS (SCENARIO 1)

RANK	AHP	COPRAS	SAW	TOPSIS	VIKOR	RANK	AHP	COPRAS	SAW	TOPSIS	VIKOR
1	29	29	18	29	30	26	24	24	16	35	33
2	50	23	40	23	19	27	49	39	19	1	31
3	18	50	30	50	24	28	1	49	42	20	15
4	26	46	2	16	49	29	33	3	33	2	17
5	46	12	27	46	25	30	13	41	12	33	28
6	23	26	25	12	39	31	20	47	43	13	16
7	9	16	49	26	4	32	39	5	35	24	34
8	28	28	11	28	13	33	15	21	14	49	42
9	17	17	29	17	2	34	45	32	24	39	14
10	16	18	34	14	35	35	3	6	32	3	11
11	40	9	44	18	3	36	41	42	4	41	23
12	19	14	8	9	1	37	37	34	20	10	29
13	12	40	50	8	20	38	34	11	47	31	38
14	27	19	1	44	9	39	11	36	37	37	46
15	25	8	5	27	41	40	10	22	10	34	47
16	14	44	48	40	27	41	31	33	15	11	50
17	8	45	26	43	48	42	47	30	45	47	12
18	44	4	17	19	40	43	5	1	31	5	45
19	30	48	28	45	43	44	32	37	41	22	21
20	4	43	39	4	37	45	36	10	7	36	6
21	2	25	46	42	10	46	22	31	36	32	7
22	48	35	23	25	8	47	7	13	22	21	5
23	42	15	3	48	44	48	21	38	21	7	32
24	43	20	9	15	18	49	6	7	38	6	36
25	35	2	13	30	26	50	38	27	6	38	22

TABLE VI  
RANKS OF 100 WEB SERVICES OBTAINED FROM 5 MCDM METHODS (SCENARIO 2)

RANK	AHP	COPRAS	SAW	TOPSIS	VIKOR	RANK	AHP	COPRAS	SAW	TOPSIS	VIKOR
1	79	29	18	29	30	51	89	57	56	20	63
2	29	23	95	23	56	52	33	3	43	62	26
3	50	79	40	79	87	53	13	41	35	89	93
4	76	50	76	50	19	54	69	47	90	33	15
5	68	46	30	60	61	55	98	55	14	69	77
6	18	60	79	16	24	56	20	92	86	49	34
7	60	12	2	46	49	57	39	5	83	93	81
8	26	26	27	12	95	58	100	88	24	65	28
9	46	16	25	26	25	59	84	52	59	71	17
10	23	28	82	73	39	60	62	67	91	13	11
11	9	17	63	94	84	61	71	21	64	97	42
12	28	94	49	75	13	62	93	80	32	24	99
13	17	68	89	14	65	63	15	81	4	39	79
14	74	18	68	17	71	64	97	32	61	3	47
15	85	9	11	28	4	65	45	78	94	84	14
16	16	14	74	18	2	66	3	99	20	98	53
17	40	73	85	76	98	67	63	70	77	41	64
18	19	76	29	68	3	68	41	6	100	10	75
19	58	54	58	9	58	69	37	96	62	31	16
20	12	85	93	27	35	70	34	53	54	57	59
21	51	74	34	51	76	71	57	75	73	37	60
22	95	90	60	85	1	72	11	51	47	64	46
23	27	40	97	74	20	73	10	42	37	52	72
24	25	58	8	8	68	74	64	91	84	63	29
25	14	19	44	44	82	75	77	95	10	11	70
26	75	44	50	54	62	76	55	61	15	34	23
27	8	8	1	90	41	77	31	71	81	47	92
28	44	45	69	40	27	78	47	34	88	77	54
29	82	4	5	58	37	79	52	11	45	5	97
30	30	82	48	43	9	80	92	36	31	55	66
31	4	83	87	82	91	81	5	22	66	81	38
32	94	48	26	91	48	82	81	59	57	32	88
33	91	86	71	86	74	83	88	72	41	92	57
34	54	43	17	45	85	84	32	33	52	88	90
35	2	25	28	25	40	85	36	69	99	22	7
36	56	100	65	19	10	86	67	30	72	80	50
37	48	35	39	42	43	87	66	37	7	36	12
38	73	97	98	4	86	88	59	1	92	78	32
39	87	15	75	48	83	89	80	63	55	67	67
40	61	89	46	83	55	90	22	10	80	66	36
41	42	56	23	100	51	91	7	13	36	59	96
42	43	20	3	15	89	92	78	31	67	21	80
43	35	93	9	95	31	93	21	38	22	7	45
44	90	2	13	30	44	94	99	65	70	99	21
45	86	62	51	35	8	95	72	7	78	72	94
46	83	24	16	61	52	96	70	66	21	70	6
47	24	87	19	56	18	97	6	98	38	6	5
48	49	84	42	87	33	98	38	64	6	96	78
49	65	39	33	1	100	99	96	77	96	38	22
50	1	49	12	2	69	100	53	27	53	53	73



matrix or the use of different aggregating methods in each MCDM method. Further, in order to evaluate the closeness of ranking, for both the scenarios, Spearman's rank correlation coefficients are calculated using (7).

The closeness of the correlation coefficient value (example, 0.9526), ranging between -1 to 1, in approximation to unity indicates complete dependency and reliability of either of the methods used. The dependency reduces with each unit reduction in the coefficient value. The negative sign indicates reverse trend existing between the two methods i.e. the rank value increasing in one method shall be declining under the second method in comparison. The inter-relationship between the MCDM methods is analyzed through correlation matrix using (7) as shown in Tables VII and VIII. It is found that AHP and TOPSIS show maximum Correlation value i.e. 0.9535 in Scenario 1 (Table VII) and 0.9526 in Scenario 2 (Table VIII), indicating the strongest correlation, as the values are generously high. Thus, it can be concluded that in this web service selection problem, AHP and TOPSIS can be used effectively for making similar types of decisions. All other combinations show positive correlation except COPRAS and VIKOR. These findings hold true for both scenarios of 50 as well as 100 web services.

TABLE VII

SPEARMAN'S RANK CORRELATION COEFFICIENTS WITH RESPECT TO SCENARIO 1

Methods	AHP	COPRAS	SAW	TOPSIS	VIKOR
AHP	-	0.7880	0.6379	<b>0.9535</b>	0.2949
COPRAS	0.7880	-	0.3290	0.8226	-0.0131
SAW	0.6379	0.3290	-	0.4982	0.3886
TOPSIS	<b>0.9535</b>	0.8226	0.4982	-	0.1602
VIKOR	0.2949	-0.0131	0.3886	0.1602	-

TABLE VIII

SPEARMAN'S RANK CORRELATION COEFFICIENTS WITH RESPECT TO SCENARIO 2

Methods	AHP	COPRAS	SAW	TOPSIS	VIKOR
AHP	-	0.6872	0.7343	0.9526	0.3769
COPRAS	0.6872	-	0.3306	0.7391	-0.0432
SAW	0.7343	0.3306	-	0.6151	0.4748
TOPSIS	0.9526	0.7391	0.6151	-	0.7109
VIKOR	0.3769	-0.0432	0.4748	0.7109	-

#### IV. CONCLUSIONS AND FUTURE SCOPE

Nowadays, there is a need to distinguish increasing number of web services with similar functionalities, being made accessible across the Internet, using a set of QoS parameters. The QoS level displays abundant influence on degree of the web service usability as well as effectiveness, both of which further influences the service popularity. In this regard, the problem of web service selection based on QoS using MCDM method is addressed in this paper. Firstly, the rankings of web services are calculated using five different MCDM methods, including AHP, TOPSIS, VIKOR, SAW, and COPRAS. Secondly, since these rankings show divergent results, Spearman's rank correlation coefficient is used to compute the degree of similarity in the rankings of one MCDM method with other MCDM methods. The whole process is done for two larger sets of web services: 50 (Scenario 1) and 100 (Scenario 2). Maximum co-efficient correlation value is deduced for the combination of AHP and TOPSIS in both the scenarios. The experimental outcomes on different sets of web services using different MCDM methods reveal that AHP and TOPSIS methods show good agreement with each other. In future, the work can be extended using different correlation methods such as Pearson, Kendall or any other correlation method. The more focus can also be put on Rank Reversal problem of MCDM methods.

#### V. ACKNOWLEDGEMENTS

The authors express their gratitude to E. Al-Masri and Q. H. Mahmoud for providing the QWS dataset which has supported this research to evaluate MCDM methods on well-validated web services based on different Quality of Service parameters.

#### REFERENCES

- [1] G. Chang. (2012). QoS-Based Web Service Selection Approach. In: Wu Y. (eds.) Software Engineering and Knowledge Engineering: Theory and Practice, Advances in Intelligent and Soft Computing, Vol. 115, pp. 887-892, Springer, Berlin, Heidelberg.
- [2] I. Egambaram, G. Vadivelou and S. P. Sivasubramanian. (2010). QoS Based Web Service Selection. In: The International Conference on Computing, Communications and Information Technology Applications (CCITA-2010).
- [3] H. Wang, P. Tong and P. Thompson. (2007). QoS-Based Web Services Selection. In: IEEE International Conference on e-Business Engineering (ICEBE 2007), pp. 631-637.
- [4] S. Ran. (2003). A Model for Web Services Discovery with QoS. ACM SIGecom Exchanges, Vol. 4, No. 1, pp. 1-10.
- [5] Y. Liu, A. H. Ngu and L. Z. Zeng. (2004). QoS Computation and Policing in Dynamic Web Service Selection. In: Proceedings of the 13th International World Wide Web Conference on Alternate Track Papers & Posters, New York, USA, pp. 66-73.
- [6] S. Haddad, L. Mokdad and S. Youcef. (2010). Selection of the best composite Web service based on quality of service. In: Proceedings of the 2nd International Symposium on Services Science and 3rd International Conference on Business Process and Services Computing (ISSS/BPSC,'10), pp. 255-266.
- [7] S. Susila and S. Vadivel. (2011). Web Service Selection based on QoS Attributes using Entropy Discretization Method. International Journal of Computer Applications, Vol. 30, No. 2, pp. 47-53.
- [8] T. Yu and K. Lin. (2005). Service selection algorithms for Web services with end-to-end QoS constraints. Information Systems and e-Business Management, Vol. 3, No. 2, pp. 103-126.
- [9] M. Behzadian, S. K. Otaghsara, M. Yazdani and J. Ignatius. (2012). A state-of-the-art survey of TOPSIS applications, Vol. 39, pp. 13051-13069.
- [10] P. Jankowski. (1995). Integrating geographical information systems and multiple criteria decision-making methods. International Journal of Geographical Information Systems, Vol. 9, No. 3, pp. 251-273.
- [11] P. Wang. (2009). QoS-aware web services selection with intuitionistic fuzzy set under consumer's vague perception. Expert Systems with Applications, Vol. 36, No. 3 (Part 1), pp. 4460-4466.
- [12] E. Al-Masri and Q. H. Mahmoud (2007). QoS-based Discovery and Ranking of Web Services. In: 16th IEEE International Conference on Computer Communications and Networks (ICCCN), pp. 529-534.
- [13] G. Kou, Y. Lu, Y. Peng and Y. Shi. (2012). Evaluation of classification algorithms using MCDM and rank correlation. International Journal of Information Technology & Decision Making, Vol. 11, No. 1, pp. 197-225.
- [14] T. L. Saaty. (2008). Decision making with the analytic hierarchy process. International Journal of Services Sciences, Vol. 1, No. 1, pp. 83-98.
- [15] K. Madani, M. Sheikhmohammady. S. Mokhtari, M. Moradi and P. Xanthopoulos. (2014). Social Planner's Solution for the Caspian Sea Conflict. Group Decision and Negotiation, Vol. 23, No. 3, pp. 579-596.
- [16] M.L. Tseng. (2009). A causal and effect decision making model of service quality expectation using grey-fuzzy DEMATEL approach. Expert Systems with Applications, Vol. 36, No. 4, pp. 7738-7748.
- [17] H. Liao and Z. Xu. (2013). A VIKOR-based method for hesitant fuzzy multi-criteria decision making. Fuzzy Optimization and Decision Making, Vol. 12, No. 4, pp. 373-392.
- [18] M. M. Fouladgar, A. Yazdani-Chamzini, A. Lashgari, E. K. Zavadskas and Z. Turskis. (2012). Maintenance strategy selection using AHP and COPRAS under fuzzy environment. International Journal of Strategic Property Management, Vol. 16, No. 1, pp. 85-104.
- [19] R. Rezik, I. Kallel, J. Casillas and A. M. Alimi. (2016). Using Multiple Criteria Decision Making Approaches to Assess the Quality of Web Sites. International Journal of Computer Science and Information Security, Vol.

- 14, No. 7, pp. 747-761.
- [20] C. Y. Huang, H. H. Wu and H. H. Lu. (2016). A MCDM Methods Based TAM for Deriving Influences of Privacy Paradox on User's Trust on Social Networks. In: International Conference on Industrial, Engineering and Other Applications of Applied Intelligent Systems, pp. 356-363.
- [21] C. L. Lin, Y. H. Shih, G. H. Tzeng and H. C. Yu. (2016). A service selection model for digital music service platforms using a hybrid MCDM approach. *Applied Soft Computing*, Vol. 48, pp. 385-403.
- [22] J. M. Sánchez-Lozano, M. S. García-Cascales and M. T. Lamata. (2016). GIS-based onshore wind farm site selection using Fuzzy Multi-Criteria Decision Making methods. Evaluating the case of Southeastern Spain. *Applied Energy*, Vol. 171, pp. 86-102.
- [23] A. Gupta and S. Kohli. (2015). An MCDM approach towards handling outliers in web data: a case study using OWA operators. *Artificial Intelligence Review*, Vol. 46, No. 1, pp. 59-82.
- [24] F. Rhimi, S. B. Yahia and S. B. Ahmed. (2016). Refining the Skyline with fuzzy similarity measures and Topsis method for the optimization of web services composition. In: 2016 IEEE International Conference on Fuzzy Systems, IEEE, pp. 2091-2097.
- [25] C.C. Sun and G. T. Lin. (2009). Using fuzzy TOPSIS method for evaluating the competitive advantages of shopping websites. *Expert Systems with Applications*, Vol. 36, No. 9, pp. 11764-11771.
- [26] L. Zhuang, G. HeQing, L. Dong, H. Tao and Z. JuanJuan. (2007). Solving Multi-Objective and Fuzzy Multi-Attributive Integrated Technique for QoS-Aware Web Service Selection. In: International Conference on Wireless Communications, Networking and Mobile Computing (WiCom), pp. 735-739.
- [27] M. Almulla, H. Yahyaoui and K. Al-Matori. (2015). A new fuzzy hybrid technique for ranking real world Web services. *Knowledge-Based Systems*, Vol. 77, pp. 1-15.
- [28] I. Dragović, N. Turajlić, D. Radojević and B. Petrović. (2013). Combining boolean consistent fuzzy logic and AHP illustrated on the web service selection problem. *International Journal of Computational Intelligence Systems*, Vol. 7, pp. 84-93.
- [29] M. Godse, R. Sonar and S. Mulik. (2008). The Analytical Hierarchy Process Approach for Prioritizing Features in the Selection of Web Service. In: IEEE Sixth European Conference on Web Services (ECOWS'08), pp. 41-50.
- [30] F. Colace, M. D. Santo and A. Pietrosanto. (2006). Evaluation Models for E-Learning Platform: an AHP approach. In: IEEE 36th Annual Frontiers in Education Conference, pp. 1-6.
- [31] J. H. Park and H. Y. Jeong. (2013). The QoS-based MCDM system for SaaS ERP applications with Social Network. *The Journal of Supercomputing*, Vol. 66, No. 2, pp. 614-632.
- [32] M. Sun, T. Zang, x. Xu and R. Wang. (2013). Consumer-Centered Cloud Services Selection Using AHP. In: International Conference on Service Sciences (ICSS), pp. 1-6.
- [33] L. Chemane, L. Ekenberg, O. Popov and T. Cossa. (2005). MCDM Model for Selecting Internet Access Technologies - A Case Study in Mozambique. In: The 2005 International Conference on Computer as a Tool, Vol. 2, pp. 1738-1741.
- [34] S. E. Shaikh and N. Mehandjiev. (2004). Multi-attribute negotiation in e-business process composition. In: 13th IEEE International Workshops on Enabling Technologies: Infrastructure for Collaborative Enterprises, pp. 141-146.
- [35] N. FakhFakh, H. Verjus, Frédéric Pourraz and P. Moreaux. (2013). QoS aggregation for service orchestrations based on workflow pattern rules and MCDM method: evaluation at design time and runtime. *Service Oriented Computing and Applications*, Vol. 7, No. 1, pp. 15-31.
- [36] Y. S. Luo, K. Yang, Q. Tang, J. Zhang and B. Xiong. (2012). A multi-criteria network-aware service composition algorithm in wireless environments. *Computer Communications*, Vol. 35, No. 15, pp. 1882-1892.
- [37] R. Karim, C. Ding and C. H. Chi. (2011). An Enhanced PROMETHEE Model for QoS-Based Web Service Selection. In: IEEE 2011 International Conference on Services Computing (SCC), pp. 536-543.
- [38] P. Xiong and Y. Fan. (2007). QoS-aware Web Service Selection by a Synthetic Weight. In: Fourth International conference on Fuzzy Systems and Knowledge Discovery (FSKD), Vol. 3, pp. 632-637.
- [39] S. K. Garg, S. Versteeg and R. Buyya. (2011). SMICloud: A Framework for Comparing and Ranking Cloud Services. In: Fourth IEEE International Conference on Utility and Cloud Computing (UCC), pp. 210-218.
- [40] H. Pervaiz. (2010). A Multi-Criteria Decision Making (MCDM) Network Selection Model providing enhanced QoS differentiation to customers. In: 2010 International Conference on Multimedia Computing and Information Technology (MCIT), pp. 49-52.
- [41] R. Yang, L. Qi, W. Lin, W. Dou and J. Chen. (2010). A Comprehensive Evaluation Method for Cross-Organizational Service Selection. In: IEEE 13th International Conference on Computational Science and Engineering (CSE), pp. 357-362.
- [42] A. Taibi and B. Atmani (2017). Combining Fuzzy AHP with GIS and Decision Rules for Industrial Site Selection. *International Journal of Interactive Multimedia and Artificial Intelligence*, Vol. 4, No. 6, pp. 60-69.
- [43] E. Al-Masri and Q. H. Mahmoud (2007). Discovering the best web service. (Poster) In: 16th IEEE International Conference on World Wide Web (WWW), pp. 1257-1258.



Pallavi Bagga

Pallavi Bagga is presently working as an Assistant Professor in the Department of Computer Science and Engineering at Lovely Professional University, Phagwara, Punjab, India. She has accomplished her Master of Technology in Computer Science & Engineering from DAV University, Jalandhar, Punjab, India in 2016. Earlier, she has completed her Bachelor of Technology in Computer Science & Engineering from Punjab Technical University, Punjab, India in 2014. Her predominant areas of research interests include Distributed Computing and Machine Learning. Nowadays, she is actively pursuing her research career in the sphere of Mobile Agents System Security using Machine Learning Algorithms.



Aarchit Joshi

Aarchit Joshi has completed his M.Tech in Computer Science and Engineering from DAV University, Jalandhar, Punjab, India. Earlier, he received his B.E. degree from Chitkara University, Barotiwala, Solan, H.P., India. His research interest topics include Multi Criteria Decision Making techniques and Optimization techniques.



Rahul Hans

Rahul Hans is currently working as an Assistant Professor in the Department of Computer Science and Engineering at DAV University, Jalandhar, Punjab, India. He has received his B.Tech degree in Computer Science and Engineering from Punjab Technical University, Jalandhar, Punjab, India and subsequently his M.Tech degree in Computer Science and Engineering from Guru Nanak Dev University, Amritsar, Punjab, India. His area of research includes Machine learning, Mobile Agent Systems and cloud computing. He has published research papers in various reputed International Journals and Conferences.